

Scouts

12th Wallasey

Members Information Pack

January 2023

#SkillsForLife

WELCOME

On behalf of everybody at the 12th Wallasey Scout Group, I would like to welcome you and your child to the Group.

As well as this pack providing you with information about our Scout Group and the adventures your child can look forward to in their time with us, we also need you to provide information about you and your child to ensure your child has the best experiences whilst in Scouting.

Once you have read through this Members Information Pack, understand your responsibilities, and are happy for your child to become a member of Scouting at 12th Wallasey Scout Group, please make sure you complete the online member information form which the Group or section leader will send you.

I hope you enjoy reading the rest of this introduction to the 12th Wallasey Scout Group, and I urge you to ask as many questions as you need.

Yours in Scouting

Debbie Peers

Group Scout Leader (GSL)

AKA – **Tic-Tac**

About Scouting

Scouting is the UK's biggest mixed youth organisation, and here at 12th Wallasey we change lives by offering our young members fun and challenging activities, unique experiences, everyday adventure, and the chance to help others so that we make a positive impact in our community. We provide young members with skills for life.

Scouting helps children and young adults reach their full potential, and we help every child to develop a host of skills including teamwork, time management, leadership, initiative, planning, communication, self-motivation, cultural awareness and commitment. Scouting really does help young people to get jobs, save lives and even change the world.

If you want to know more about Scouting in the UK, visit <http://scouts.org.uk/what-we-do/>

Group Sections

We have three very active sections at the 12th Wallasey Scout Group. New members of the Group will join as either a Beaver, a Cub or a Scout, and the Group will also assist in their transition from Scouting to Explorers once they reach 14 years of age, where members then have the option of becoming an Explorer Scout and Young Leader.



Girls & Boys aged 5 ¾ – 8

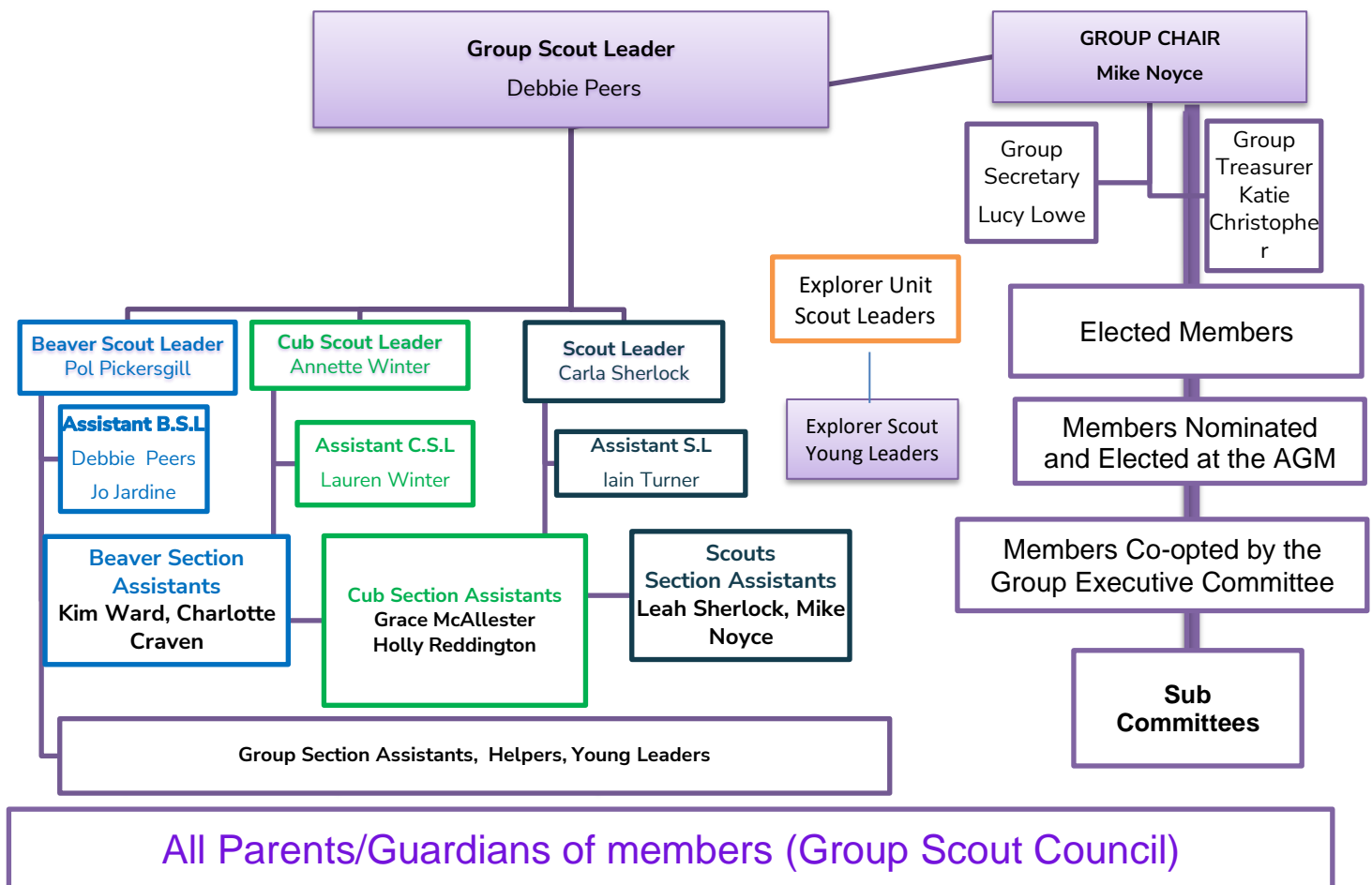


Girls & Boys aged 8 – 10½



Girls & Boys aged 10½ – 14

Who is Who in the Group



Meeting Place – HQ

All Sections meet at **Serpentine Road Family Church**
Serpentine Road, Wallasey, CH44 0AA.



If you are not familiar with the church the Group Scout Leader will arrange to meet you and show you round the Group HQ to make sure you know where everything is. Your child's section leader can also familiarise you with our First Aid and Emergency procedures. Alternative venues may be used for special Group, District or County events and activities.

The Group and Scout Association Aim

The Group provides adventurous activities and personal development opportunities for all its members delivering skills for life. Personal development means promoting the physical, intellectual, social and spiritual well-being of the individual, helping them achieve their full potential. In Scouting, we believe that young people develop most when they are 'learning by doing,' when they are given responsibility, work in teams, take acceptable risks and think for themselves.

Moving On Through Scouting

Children start life in the Group as a Beaver Scout, aged at least 5 years 9 months. They remain a Beaver Scout until their 8th Birthday when they then *Move On* to become a Cub Scout. At the age of 10½ they then *Move On* again to become a Scout until the age of 14, when they again *Move On* to become Explorers with our successful District Unit, then Network from the age of 18.

Uniform & Investiture

All members when attending the weekly meetings or scouting related activities will need to wear an official **Beaver or Cub Scout Sweatshirt** or **Scout Shirt**. These can be bought from the Scout Store, Balls Road, Birkenhead, or online from <https://shop.scouts.org.uk/>.

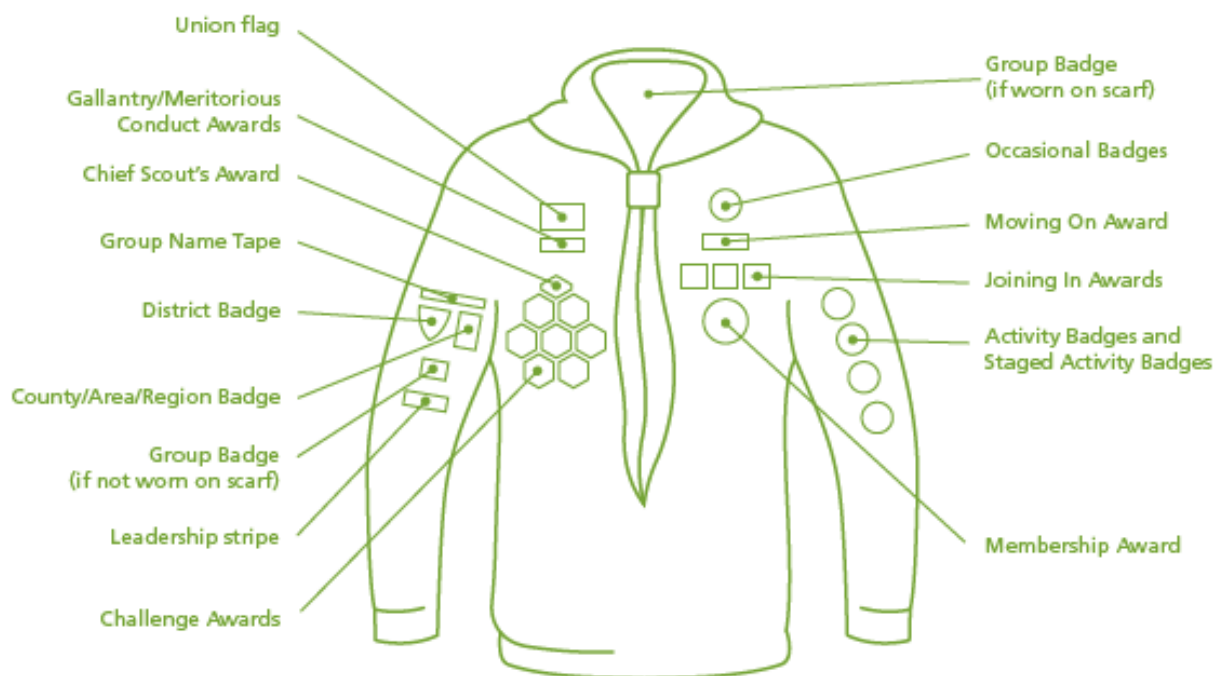
An official grey and purple neckerchief is presented to all young members when they are invested into scouting by their section leader, this is usually several weeks after joining. Official uniform is also worn on special occasions when we then request members to wear smart dark trousers.

Any member wishing to wear official uniform trousers or shorts may do so, but we don't expect this. What we would ask is that all other items of clothing worn at weekly meetings are sensible, comfortable, and will allow young members to join in a variety of activities.

Activity Badges and Awards

Throughout their time in Scouting, all young members who are actively involved will be constantly working towards the balanced programme of activities and adventures, as they develop skills for life. Their achievements are recognised through the awarding of [Activity and Challenge Badges](#), as well as other forms of recognition. The Beavers and Cub uniform on the right shows you where all the badges need to go and how the uniform should be worn. Oh, and don't worry too, we will show everybody how to roll and wear their neckerchief.

All badges are to be sewn onto their uniform in the appropriate place and we encourage the children to have a go at doing this themselves, especially once they reach the Scout section. If you have any questions about badges and awards, please speak to our Section Leaders.



Meeting Times

All sections of the Group meet at Serpentine Road Family Church hall on **Monday night**:

- Beaver Scouts - Start: 6:00pm - Finish: 7:15pm
- Cub Scouts - Start: 6:00pm - Finish: 7:25pm
- Scouts - Start: 7:30pm - Finish: 9:00pm

Throughout the year each section will also provide a number of activities and adventures away from the normal meeting place, and on different days and times. These might include days out, camps, or local trips to the park. You will be notified in advance of these activities taking place.

What it Costs

Scouting is an affordable way of providing a range of exciting and adventurous activities for your child. In a 2010 survey, 75% of parents said Scouting provided the best value for money compared to other extra-curricular activities like sports and martial arts groups, youth clubs and drama or music classes.

The fees charged cover the cost of scouting, such as supporting our HQ, our weekly activities, equipment, badges, equipment insurance and so on. **But important to note nearly a half of our membership fee also covers charges made for membership of the Scout Association and the insurance for EACH young member, and support fees to our County and District which we pay every March in one lump sum.** So, we have to allow a certain amount from each monthly subs to just cover this cost.

Our Scout group is run by volunteers, and is a charitable organisation reliant on subscription charges, donations and fundraising to cover all of our costs. We encourage all parents to help as much as possible with our fundraising activities, as this ensures we can maintain the low costs of scouting for all.

Joining Fee

There is a one-off **£10 joining fee** payable for each young member, which should be paid before members become invested (usually after about 4-6 weeks). This covers the cost of the group necker, woggle and

joining badges. Uniform is not provided. This can be purchased online from Scout Store or at the Scout Shop, Balls Rd, Birkenhead. Minimum you need to buy is a sweatshirt for beavers and cubs, and shirt for scouts. This is what the badges are sewn onto (not the polo tops). If you lose your necker, a replacement cost of £5 will be charged. We do sometimes have preloved sweatshirt and polos returned to us which we can then supply to members for donation. Please see the GSL if interested in this option for further details.

Subscriptions Charges & Membership Fees

Our annual subscription charge is £162 per year per young person, which equates to **£13.50 per month** (payable over 12mths even though we don't meet in summer holidays). There is no reduction for siblings.

This monthly charge includes all weekly meetings which are ran during school terms. We do not accept cash. It is up to you whether you pay the full due amount monthly, quarterly or annually, but we ask that all payments are set up by standing order directly into the Group Account, detailed below:

Please make sure your child's name is used as the payment reference:

Lloyds TSB: Sort Code: 30-90-09 Account No: 55149968
Account Name: 12th Wallasey Scout Group – it's a business account

Please advise the section leader/group scout leader once you have set up the order.

The payment will be allocated to the month in which is it received into the account unless a bank holiday has caused 2 payments in one month. (no part payments per month as it is a yearly cost).

If you miss any monthly payments you will be contacted by GSL or Group Treasurer and we will request that you make up the payments as soon as you can to ensure you are on track for the yearly cost to be paid, or a payment plan can be agreed.

Trips, camps and out of HQ activities are charged for separately when not covered as part of the weekly activities, and whilst these costs vary, please be assured we do everything possible to keep the costs to you as low as possible. We try to subsidise where we can, depending on how group funds are looking.

Discounts may be applicable to siblings attending the same residential camps. You will be told of costs on the communication for the activity.

There are no sibling discounts for monthly subs, or day trips/one-off activities.

We don't want young people to miss out through financial hardship though. If you have concerns about your finances that may prevent your child taking part in scouting, please make sure you speak to the Group Scout Leader at the earliest opportunity and any support will be provided in the strictest of confidence.

Group Membership Policy for Parents & Children

The Scouting Association is an Equal Opportunities organisation and the 12th Wallasey Scout Group especially welcomes everybody, regardless of any needs they may have. Together we will learn how to make sure all needs are met be they young members or adults!

1. As a parent you automatically become a member of the Group Scout Council, with opportunities to extend your role and enjoy the fun and activities along with your child if you wish to. **In return for our Group's volunteers giving up their time for your children, we require you to note the following requirements in respect of your child's membership with the Group, those being that as parents/guardians/carers you:**
 - a. Attend and vote in the Group's Annual General Meeting every year.
 - b. Assist with general Group Fundraising activities whenever possible.

2. As a parent/guardian/carer you must complete all relevant membership forms and any additional health or information related forms required for their child to attend events and activities. **You should also notify your child's section leader of any change of address, telephone numbers, mobile phone numbers or email address as we depend on this information for health & safety reasons in the event of an emergency.** We use this information to stay In Touch with you during events and activities.

3. As a parent/guardian/carer you must ensure you pay the Member Subscription charges as described on page 6 of this pack. However, we don't want young people to miss out through financial hardship. Should you experience any financial difficulties, please speak with the Group Scout Leader as soon as you can, as assistance may be available, and any support will be provided in the strictest of confidence. If any financial issues, the minimum amount we ask to be paid by parents is at least the equivalent of the current annual membership fee payable to the UK Scout Association per child which does change each year.

Any non-payment of subscriptions without notification could affect your child's membership!

4. **As a parent/guardian/carer you must notify your child's section leader if your child is likely to be absent.**
 - a. Subscriptions still have to be paid to maintain your child's place, but exceptions may apply. Please check with the Group Scout Leader.
 - b. Sometimes children are ill, and may be absent for long periods of time, so long as you have notified the relevant leaders and GSL, your child's place should be maintained.
 - c. **Absences of more than 6 weeks without contact or notification will result in your child's place being lost (even if payments have been made).**

Behaviour Policy

So everybody has the opportunity to enjoy a safe and happy time whilst being a member of the Group it is important everybody acts accordingly. Good conduct is rewarded at every opportunity, but it is also important members are made aware of things that can affect their attendance and membership with the Group and in Scouting.

1. Any member ruled to be causing disruption to the other group members preventing them from enjoying activities will receive a verbal warning about their behaviour. Young member's parents/guardian/carer will be notified accordingly.
2. Any member ruled to be causing continued disruption could be suspended for a period of 2 weeks. Please be assured that it is exceptionally rare for any member to be suspended.
3. Suspended members will be excluded from any activities during the period of suspension, and:
 - a) Subscriptions must continue being paid in full for the duration of the suspension if membership is to be maintained.
 - b) Any monies paid in relation to activities or events occurring during a period of suspension may not be refunded depending on the circumstances.
 - c) Repeated incidents following two suspensions will result in the member being dismissed.
4. In the event of serious incidents, or challenging behaviour, members may be dismissed at the discretion of the Group Scout Leader.
5. We have a **zero tolerance to bullying** and any member found to be bullying another will be dismissed from the group and have their membership revoked immediately.
6. Any member with concerns about the conduct of adults or young members should immediately bring the matter to the attention of the Group Scout Leader or the District Commissioner.

Joining the Group

To join the group please contact the Section Leader or GSL. A place is not always readily available as we have Scout Policies on numbers of maximum young people per section and also the ratios of leaders to young people. Our space is limited in the church so we need to manage numbers so we can run our meetings and activities safely. We try to accommodate everyone but is not always possible.

Our priority list in order for joining the group or specific sections is as follows:

1. Leaders/Exec members children
2. Existing members - to allow them to move up to next sections
3. Siblings of current members
4. Children in local care/foster care
5. New members not currently in a scout group locally
6. Members wishing to move from another group in the district area

Entry is not based on length of time on a waiting list as we don't keep a long list. We will only accept members on the waiting list as they near to their age of joining i.e.. within 12 mths. We will not add when they are born/too young as it makes our job harder to fulfil the priority list as above.

We cannot always accommodate if the young person is halfway through a section age when wants to join the group. e.g., 9 yrs so cubs age, as we may not have space for them to join scouts when 10.5yrs old based on current membership at that time.

You will be contacted by email to offer a place or to confirm added you to the list. If we do not hear back with 3 weeks, or do not attend a first trial week in the period as requested then you will not be added or given the place (unless notification of exceptional circumstances to GSL).

A verbal conversation with a leader does not guarantee being added to a list or given a place. Please contact us via email, Facebook messenger or if you do have a chat with a leader, they will take your email address, and you will get an email confirming a place once we have checked on capacity.

If our sections will be full for only a short time , we will add you to a waiting list.

If our sections will be full for a long time (e.g. over 6-12mths) we will ask other groups in district to accommodate you –or you can email join@wallaseyscouts.org.uk

If you are willing to assist with the group and become a section assistant/leader you may also get priority for your children. (Hint Hint!!!) But you will have to stay for the longevity once they have moved sections.

Fundraising

In return for our Group's volunteers giving up their time for your children, we require you to assist or take part with general Group Fundraising activities whenever possible. We do this as much as we can to keep our subs as low as possible.

Key Fundraising:

Wirral Coastal Walk – sponsored walk usually fundraising for the group and /or specific activities such as large camps

12th Wallasey Scout Group Lucky Numbers

There is a choice of number (1-50) given on a first come first served basis. There is no restriction on the amount of numbers you can hold as long as each one is paid for.

- Pay £2 per number to be paid on or before 25th of each month for inclusion into the following month's draw by standing order into group bank account. Pay quarterly, 6mthly or full year.
- If a number hasn't been paid for, for a particular month it will not be included in that draw and the number may be re-allocated to another person for the following month.
- Wallasey Scout Group cannot be held liable for missed payments.
- The money will be distributed - 50% to group funds, 35% 1st prize, 15% 2nd prize
- The more numbers sold, the higher the prize fund and more funds will be raised for the group
- If popular, we will add more numbers and will also do special draws throughout the year e.g. Christmas. Special draws will be advised nearer the time
- Numbers will be drawn on the first Monday of the month. An online random number generator will be used for the draw.
- If a particular number has been randomly drawn and nobody holds that number, then further numbers will be drawn until there is a winner of that prize

- Players must be aged 18 and over and have a connection to the group.
- The Group treasurer will monitor payments
- Winners will be notified and winnings paid directly to their nominated account

A bit more about Scouting

There are many ways as an adult you can help out in Scouting, just some of the various roles can be seen below, and specifically the roles within our Group are:

- Section Assistant
- Occasional Helper
- Fundraiser
- Chairman/Secretary/Treasurer
- Assistant Leader
- Section Leader / Group Scout Leader

Information about these roles does not appear in this pack, but if you would like to know more please speak with any of our adult members, or contact our Group Scout Leader.

Who is the Group Scout Leader?

Every Scout Group has a Group Scout Leader (GSL) or Group Manager.

Like everybody in the Group, the GSL is a volunteer, but has overall responsibility for managing and supporting everything that goes on within the Scout Group, and they are responsible for all of the Leaders, volunteers and have overall responsibility for our Young Members. Their role is to ensure the Group runs effectively and efficiently, and with support from the Group Chairman and Group Executive, they make sure Scouting within the Group develops in accordance with the rules and policies of The Scout Association. Our Group Scout Leader is:

Debbie Peers

AKA – Tic-Tac

Email: Debbie.peers@12thwallasey.org

Debbie has been with 12th Wallasey Scout group since 2011, starting as parent helper, then Assistant Beaver Leader, Assistant Group Scout Leader and then became GSL in October 2019. Her son Adam has been through all section of the 12th Wallasey groups from 2011-2018 and was an explorer and Young Leader in the district, so Tic-Tac has been a parent of a young person in scouting too.

Useful Group Contacts

If you wish to get in touch by email:

Beaver Section Email: beavers@12thwallasey.org

Cub Section Email: cubs@12thwallasey.org

Scouts Section email: Carla.sherlock@12thwallasey.org

Group Chair: mike.noyce@12thwallasey.org

Group Treasurer: katie.christopher@12thwallasey.org

Group Secretary: lucy.lowe@12thwallasey.org

Keeping in touch with you!

Once your child is registered with us, it is important for you to keep us informed of any changes to your contact details.

Our leaders use a system known as InTouch to manage communications in an emergency during most Scout activities and events, as well as for keeping you informed of any changes to events and activities taking place. We may also use a system known as home contacts, if we are away at camps overnight, this system will be explained in more detail to you when your child has their first overnight experience.

We communicate using the most appropriate methods, which may include any or all of the following:

- Text or call or whatsapp to your mobile phone
- Email from your child's Section Leader, Group Scout Leader or Group Executive
- Phone call to your landline or mobile
- Facebook Notification from the following account - <https://www.facebook.com/12thwallasey>

Our preferred method of contact for general information is email, so it is important that you keep us informed of any changes to your email address.

The Group recognises not everybody has digital skills, or wishes to sign up to social media, we therefore will try to manage communications to suit the needs of all of our member's parents. We do however try our best to help any parents having difficulties with getting online, or the social media channels we use. If you need any support, please ask your child's section leader.

As a group, we encourage all of our young members to behave responsibly online and adhere to the age restrictions and recommendations set by online service providers.

Please follow our facebook page for group notifications on meetings and events too
<https://www.facebook.com/12thwallasey>

We also have a closed facebook page just for parents/carers

A Brief History of the 12th

The Group's life started in 1921, when at the time it was the 9th Wallasey Scout Group. Shortly after World War II things changed for various reasons, as they did during wartime! With the 9th Wallasey Scout Group HQ being bombed, Scouting continued from St John's Church, which in 1943 marked the birth of the 12th Wallasey Scout Group. The Group has always had a grey neckerchief, and its purple band was added in the year 2000 to commemorate the Millennium. The Group also has its own unique badge, which is awarded to all members after spending their first Night Away, be they a Beaver, Cub, Scout or Leader. The badge allows us to commemorate the Group founder, Julian Arthur, whose name is given to the award. Find out more on our website History page - <https://www.12thwallasey.co.uk/history>

A Wider Look at Scouting

The 12th Wallasey Scout group is one of many Scout Groups in Wallasey District, and we have an active Explorer Scout Unit and District Network Section too.

The District has its own Headquarters, where our Explorer Scouts meet and which can be used for events and activities. The district also has its own Boathouse, which is run and maintained by the 33rd Wallasey Sea Scouts.

Wallasey District scouting takes place within the County of Merseyside, but Scouting is Global, and our Group, District and County identifies our immediate support and structure... beyond that, name your county, name your country and you'll be sure to find a Scout Group operating there!



Where to Get More Information.

There is a wealth of information and resources available, here are some you may find useful!

Group Website: www.12thwallasey.co.uk

District Website: www.wallaseydistrictscouts.co.uk

County Website: www.merseysidescouts.com

National Website: www.scouts.org.uk

Frequently Asked Questions

Do you have to be religious?

The Scout Association in the United Kingdom is an open association. This means we are made up of Members of different faiths, including those with no faith, and identify ourselves with no one faith exclusively. Membership is open to all those individuals who share our fundamental values, and are willing to make a commitment to them, expressed by the Promise and Law.

Different versions of the Promise are available to suit different faiths or those who have no affirmed faith. More information about the Scout Promise is available [here](#).

What insurance do I/the young people have?

All Members of The Scout Association have personal accident insurance and legal liability cover whilst on Scouting activities. Current details can be obtained from www.scouts.org.uk/insurance. You can also talk to our Group Scout Leader if you have any questions or concerns.

Now Enjoy...

Scouting has been enjoyed by millions, for over 100 years and now you and your child are part of the next 100 years of adventure!



UK Chief Scout

Bear Grylls

