

WELCOME TO THE ADVENTURE

MEMBERS INFORMATION PACK

**12th Wallasey
Scout Group
Making it
happen...**

BEAVERS 

cubs 

SCOUTS 



WELCOME

On behalf of everybody at the 12th Wallasey Scout Group, I would like to welcome you and your child to the group.

As well as this pack providing you with information about our Scout Group and the adventures your child can look forward to in their time with us, we also need you to provide information about you and your child to ensure your child has the best experiences whilst in Scouting.

Once you have read through this New Member Information Pack, understand your responsibilities, and are happy for your child to become a member of Scouting at 12th Wallasey Scout Group, please make sure you complete the online member information form on our website using the link below:

www.12thwallasey.co.uk/memberform

I hope you enjoy reading the rest of this introduction to the 12th Wallasey Scout Group, and I urge you to ask as many questions as you need.

Yours in Scouting

Andrew Pickersgill

Group Scout Leader

AKA – **Hawkeye**

About Scouting

Scouting is the UK's biggest mixed youth organisation, and here at 12th Wallasey we change lives by offering our young members fun and challenging activities, unique experiences, everyday adventure and the chance to help others so that we make a positive impact in our community.

Scouting helps children and young adults reach their full potential, and we help every child to develop a host of skills including teamwork, time management, leadership, initiative, planning, communication, self-motivation, cultural awareness and commitment. Scouting really does help young people to get jobs, save lives and even change the world.

If you want to know more about Scouting in the UK, visit <http://scouts.org.uk/what-we-do/>

Group Sections

We have three very active sections at the 12th Wallasey Scout Group. New members of the Group will join as either a Beaver, a Cub or a Scout, and the Group will also assist in their transition from Scouting to Explorers once they reach 14 years of age, where members then have the option of becoming an Explorer Scout and Young Leader.



Girls & Boys aged 5 ¾ – 8

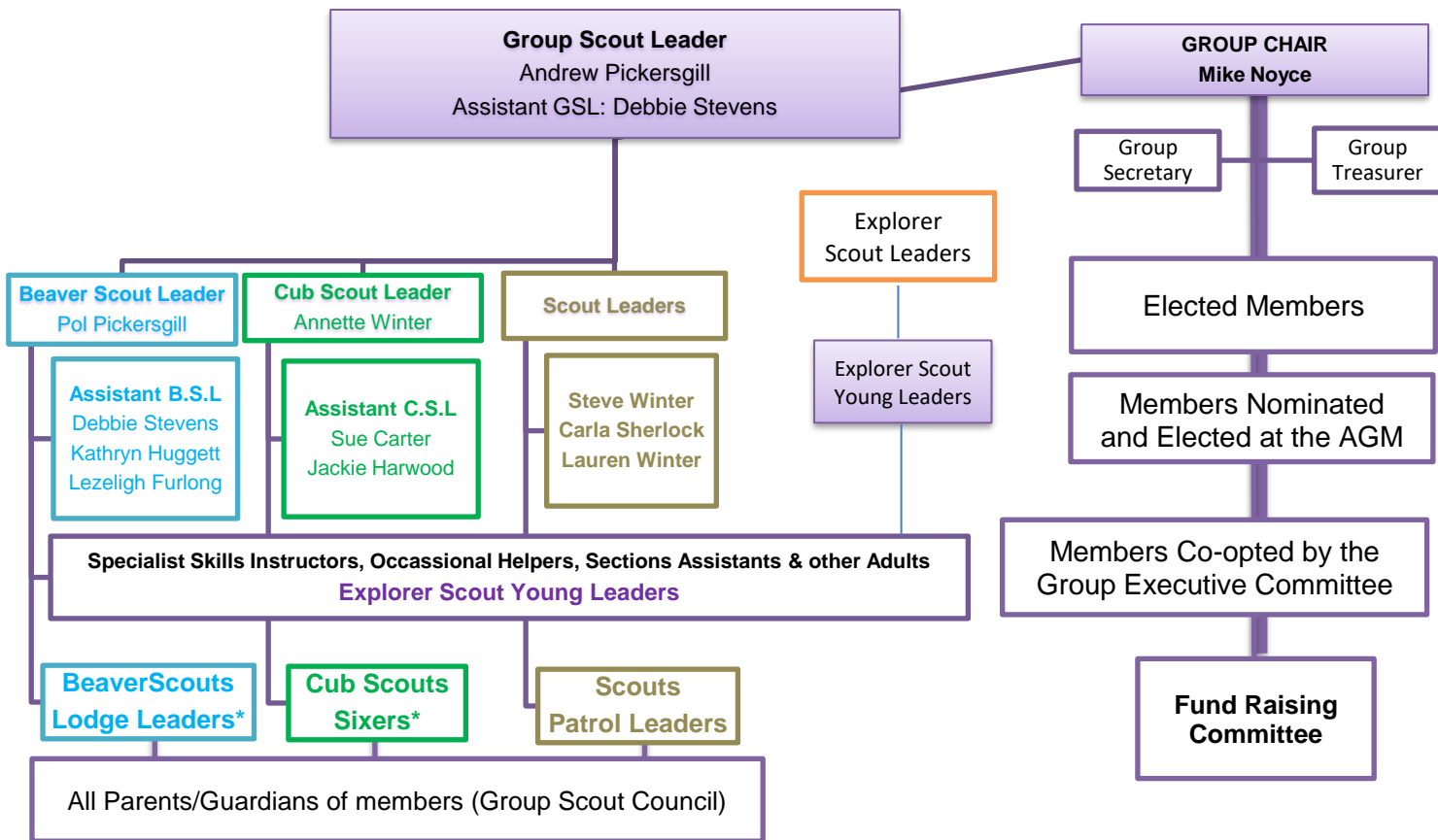


Girls & Boys aged 8 – 10½



Girls & Boys aged 10½ – 14

Who is Who in the Group



Meeting Place – HQ

All Sections meet at
Serpentine Road Family Church
 Serpentine Road, Wallasey, CH44 0AA.



Alternative venues may be used for special Group, District or County events. If you are not familiar with the church the Group Scout Leader will arrange to meet you and show you round the Group HQ to make sure you know where everything is. Your child's section leader can also familiarise you with our First Aid and Emergency procedures.

The Group and Scout Association Aim

The Group provides adventurous activities and personal development opportunities for all its members. Personal development means promoting the physical, intellectual, social and spiritual well-being of the individual, helping them achieve their full potential. In Scouting, we believe that young people develop most when they are 'learning by doing,' when they are given responsibility, work in teams, take acceptable risks and think for themselves.

Moving Through Scouting

Children start life in the Group as a Beaver Scout, aged at least 5 years 9 months. They remain a Beaver Scout until their 8th Birthday when they then *Move On* to become a Cub Scout. At the age of 10½ they then *Move On* again to become a Scout until the age of 14, when they again *Move On* to become Explorers with our successful District Unit, then Network from the age of 18.

Uniform

All members when attending the weekly meetings or scouting related activities will need to wear an official **Beaver or Cub Scout Sweatshirt or Scout Shirt**. These can be bought from the Scout Shop, Balls Road, Birkenhead, or online from <http://shop.scouts.org.uk/>

An official grey and purple neckerchief is presenting to all young members when they are invested into scouting by their section leader, this is usually several weeks after joining. Official uniform is also worn on special occasions when we then request members to wear smart dark trousers.

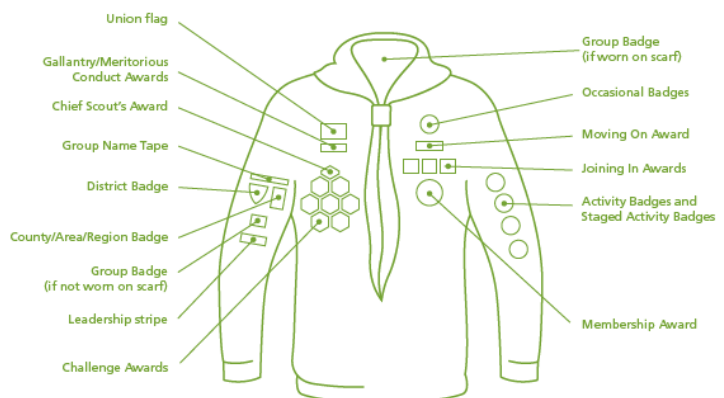
Any member wishing to wear official uniform trousers or shorts may do so, but we don't expect this. What we would ask is that all other items of clothing worn at weekly meetings are sensible, comfortable, and will allow young members to join in a variety of activities.

Activity Badges and Awards

Throughout their time in Scouting, all young members who are actively involved will be constantly working towards the balanced programme of activities and adventures. Their achievements will be recognised through the awarding of Activity and Challenge Badges, as well as others

The Beavers and Cub uniform on the right shows you where all the badges need to go and how the uniform should be worn. Don't worry too, we will show everybody how to roll and wear their neckerchief.

All badges are to be sewn onto their uniform in the appropriate place and we encourage the children to have a go at doing this themselves, especially once they reach the Scout section.



If you have any questions about badges and awards, please speak to our Section Leaders.

We don't want young people to miss out through financial hardship. If concerns about finances may prevent your child taking part speak to your child's leader, as assistance may be available, and any support will be provided in the strictest of confidence.

Meeting Times

All sections of the Group meet at Serpentine Road Family Church hall on **Monday night**:

- Beaver Scouts Start: 6:15pm - Finish: 7:30pm
- Cub Scouts Start: 6:15pm - Finish: 7:30pm
- Scouts Start: 7:30pm - Finish: 9:00pm

Throughout the year each section will also provide a number of activities and adventures away from the normal meeting place, and on different days and times. These might include days out, camps, or local trips to the park. You will be notified in advance of these activities taking place.

What it Costs

Scouting is an affordable way of providing a range of exciting and adventurous activities for your child. In a 2010 survey, 75% of parents said Scouting provided the best value for money compared to other extra-curricular activities like sports and martial arts groups, youth clubs and drama or music classes.

The fees charged cover the cost of scouting, such as supporting our HQ, our weekly activities, equipment, badges and so on. But importantly the charges made cover membership of the Scout Association and the insurance for each member – this is known as capitation. Trips, camps and activities are usually charged for separately when not covered as part of the weekly activities.

Scouting is run by volunteers, and is a charitable organisation dependant on subscription charges, donations and fundraising to cover all our costs. We encourage all parents to help as much as possible with our fundraising activities, as this ensures we can maintain the low costs of scouting for all.

We don't want young people to miss out through financial hardship though. If concerns about finances may prevent your child taking part, please make sure you speak to your child's leader, as assistance may be available, and any support will be provided in the strictest of confidence.

Joining Fee

There is a £10 joining fee payable for each young member, which should be paid before members become invested (usually after about 6 weeks).

Subscriptions & Capitation

Our annual subscription charge is £120, which equates to **£10.00 per month**. It is up to you whether you pay monthly, quarterly or annually, but we ask that all payments are set up by standing order directly into the Group Account, detailed below:

Please use your child's name is used the payment reference:

Lloyds TSB: Sort Code: 77-17-24 Account No: 06977360

Please advise the section leader once you have set up the order.

Group Membership Policy for Parents & Children

The Scouting Association is an Equal Opportunities organisation and the 12th Wallasey Scout Group especially welcomes everybody, regardless of any needs they may have. Together we will learn how to make sure all needs are met be they young members or adults!

1. As a parent you automatically become a member of the Group Scout Council, with opportunities to extend your role and enjoy the fun and activities along with your child if you wish to. In return for our Group's volunteers giving up their time for your children, we ask at the very least you:
 - a. Attend the Annual General Meeting each year
 - b. Assist with the Group's commitment to Christmas Scout Post (the Group's biggest fundraiser helping keep subscription and activity costs to a minimum) by:
 - 1) Volunteering to help with the sorting at District Headquarters
 - 2) Volunteering to help with secondary sorting at Group Headquarters
 - 3) At the very least accept a small quantity of cards to post in your area over two weekends in December each year.
2. As a parent you must notify your child's section leader of any change of address, telephone numbers, mobile phone numbers or email address as we depend on this information in an emergency. We use this information to stay InTouch with you during events and activities.
3. As a parent you must ensure you pay the Member Subscription charges as described on page 5 of this pack. If you experience any financial difficulties, please speak with your child's leader or the Group Scout Leader. We don't want young people to miss out through financial hardship though. If concerns about finances may prevent your child taking part, please make sure you speak to your child's leader, as assistance may be available, and any support will be provided in the strictest of confidence.

Any none payment of subscriptions without notification could affect your child's membership.

4. As a parent you must notify your child's section leader if your child is likely to be absent.
 - a. Subscriptions still have to be paid to maintain your child's place, but exceptions may apply please check with the Group Scout Leader.
 - b. Sometimes children are ill, and may be absent for long periods of time, so long as you have notified the relevant leaders, your child's place should be maintained.
 - c. Absences of more than 8 weeks without contact or notification will result in your child's place being offered to persons on our waiting list.

So everybody has the opportunity to enjoy a safe and happy time whilst being a member of the Group it is important everybody acts accordingly. Good conduct is rewarded at every opportunity, but it is also important members are made aware of things that can affect their attendance and membership with the Group.

Behaviour Policy

1. Any member ruled to be causing disruption to the other group members preventing them from enjoying activities will receive a verbal warning about their behaviour. Young member's parents will be notified accordingly.

Behaviour Policy Continued

2. Any member ruled to be causing continued disruption could be suspended for a period of 2 weeks. Please be assured that it is exceptionally rare for any member to be suspended.
3. Suspended members will be excluded from any activities during the period of suspension.
 - a) Subscriptions must continue being paid in full for the duration of the suspension if membership is to be maintained.
 - b) However, monies paid in relation to activities occurring during a period of suspension may not be refunded.
 - c) Repeated incidents following two suspensions will result in the member being dismissed.
4. In the event of serious incidents, or challenging behaviour, members may be dismissed at the discretion of the Group Scout Leader.
5. We have a zero tolerance to bullying and any member found to be bullying another will be dismissed from the group and have their membership revoked immediately.
6. Any member with concerns about the conduct of adults or young members should immediately bring the matter to the attention of the Group Scout Leader.

A bit more about Scouting

There are many ways as an adult you can help out in Scouting, just some of the various roles can be seen below, and specifically the roles within our Group are:

- Section Assistant
- Occasional Helper/Parent
- Fundraiser
- Chairman/Secretary/Treasurer
- Assistant Leader
- Section Leader / Group Scout Leader

Information about these roles appears in this pack, but if you would like to know more please speak with any of our adult members, or contact our Group Scout Leader.

Who is the Group Scout Leader?

Every Scout Group has a Group Scout Leader (GSL) or Group Manager.

Like everybody in the Group, the GSL is a volunteer, but has overall responsibility for managing and supporting everything that goes on within the Scout Group, and is responsible for all of the Leaders and volunteers. Their role is to ensure the Group runs effectively and that Scouting within the Group develops in accordance with the rules and policies of The Scout Association. Our Group Scout Leader is:

Andrew Pickersgill
AKA – Hawkeye
Email: hawkeye@12thwallasey.org
Mobile: 07952 987 402

**SCOUTING IS ABOUT
FUN, TEAMWORK
AND ADVENTURE.**



Other Useful Group Contacts

If you wish to get in touch by email:

Beaver Section Email: beavers@12thwallasey.org

Cub Section Email: cubs@12thwallasey.org

Scout Section Email: scouts@12thwallasey.org

Assistant Group Scout Leader: debbie.stevens@12thwallasey.org

Group Chair: mike.noyce@12thwallasey.org

Keeping in touch with you!

Once your child is registered with us, it is important for you to keep us informed of any changes to your contact details.

Our leaders use a system known as InTouch to manage communications in an emergency during all Scout activities and events, as well as for keeping you informed of any changes to events and activities taking place. We communicate using the most appropriate methods, which may include any or all of the following:

- Phone call to your landline or mobile
- Text to your mobile phone
- Email from your child's Section Leader, The Group Scout Leader or Group Executive
- Twitter Notification from the following account - <https://twitter.com/12thWallasey>
- Facebook Notification from the following account - <https://www.facebook.com/12thwallasey>
- Website notices or Letters Home at - <https://www.12thwallasey.co.uk>

(note: the group website homepage shows all twitter notifications)

The Group recognises not everybody has digital skills, or wishes to sign up to social media, we therefore try to manage communications to suit the needs of all of our member's parents. We do however try our best to help any parents having difficulties with getting online, or the social media channels we use. If you need any support, please ask your child's section leader.

As a group, we encourage all of our young members to behave responsibly online and adhere to the age restrictions and recommendations set by online service providers.

A Brief History of the 12th ...

The Group's life started in 1921, when at the time it was the 9th Wallasey Scout Group. Shortly after World War II things changed for various reasons, as they did during wartime! With the 9th Wallasey Scout Group HQ being bombed, Scouting continued from St John's Church, which in 1943 marked the birth of the 12th Wallasey Scout Group. The Group has always had a grey neckerchief, and its purple band was added in the year 2000 to commemorate the Millennium. The Group also has its own unique badge, which is awarded to all members after spending their first Night Away, be they a Beaver, Cub, Scout or Leader. The badge allows us to commemorate the Group founder, Julian Arthur, whose name is given to the award.

Find out more on our website History page - <https://www.12thwallasey.co.uk/history>

A Wider Look at Scouting

The 12th Wallasey Scout group is one of 11 Scout Groups in Wallasey District.

The District has its own Headquarters, where our Explorers meet and which can be used for events and activities. The district also has its own Boathouse, which is run and maintained by the 33rd Wallasey Sea Scouts.

Wallasey District scouting takes place within the County of Merseyside, but Scouting is Global, and our Group, District and County identifies our immediate support and structure... beyond that, name your county, name your country and you'll be sure to find a Scout Group operating there!



Where to Get More Information.

There is a wealth of information and resources available, here are some you may find useful!

Group Website: www.12thwallasey.co.uk

District Website: www.wallaseydistrictscouts.co.uk

County Website: www.merseysidescouts.com

National Website: www.scouts.org.uk

Frequently Asked Questions

Do you have to be religious?

The Scout Movement includes Members of many different faiths and religions as well as those with no formal religion, and Members of the Movement are encouraged to:

- make every effort to progress in the understanding and observance of the Promise to do their best to do their duty to God or to uphold Scouting's values as appropriate;
- explore their faith, beliefs and attitudes;
- consider belonging to some faith or religious body;
- carry into daily practice what they profess.

What insurance do I/the young people have?

All Members of The Scout Association have personal accident insurance and legal liability cover whilst on Scouting activities. Current details can be obtained from www.scouts.org.uk/insurance. You can also talk to our Group Scout Leader if you have any questions.

Now Enjoy...

Scouting has been enjoyed by Millions, for over 100 years... and now you and your child are part of the next 100 years of adventure!

UK Chief Scout

Bear Grylls

A handwritten signature in black ink that reads 'Bear'.

